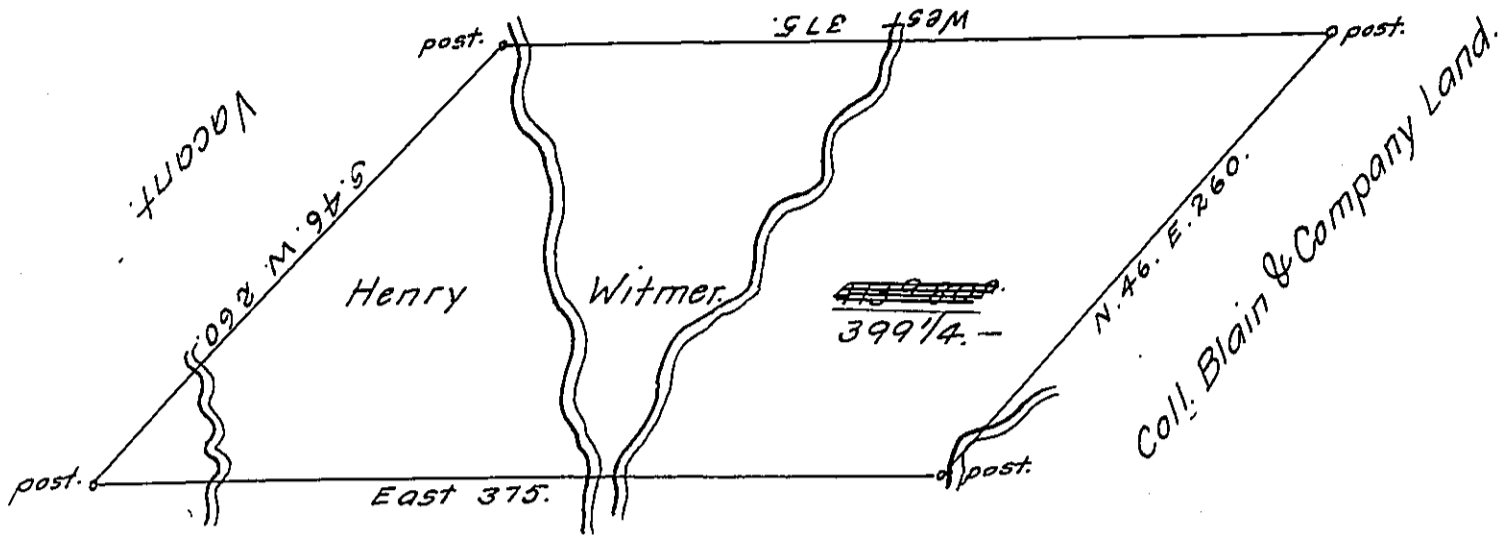


346

No 2 3<sup>d</sup> 4<sup>th</sup> Novem<sup>r</sup> 1784. ~~Henry~~ Witmers Land.



John Witmers land.

Q-74-277

A Draught of a Tract of Land Situate on Witmers Run on the waters of Clearfield Creek Surveyed the third day of November, 1784 in Pursuance of a Warrant Granted to Henry Witmer the 1<sup>st</sup> Day of July, 1784. Containing <sup>Three</sup> ~~Five~~ Hundred and <sup>Ninety nine</sup> ~~Eighteen~~ Acres ~~and Eighteen perches~~ and the usual Allowance of Six Per. Cent. for Roads.

To John Lukens, Esqr, S.G.

George Woods, D.S.

IN TESTIMONY that the above is a copy of the original remaining on file in the Department of Internal Affairs of Pennsylvania, made conformably to an Act of Assembly approved the 16th day of February, 1833, I have hereunto set my Hand and caused the Seal of said Department to be affixed at Harrisburg, this fifteenth day of February, 1912.

*Henry Howell*  
 Secretary of Internal Affairs.